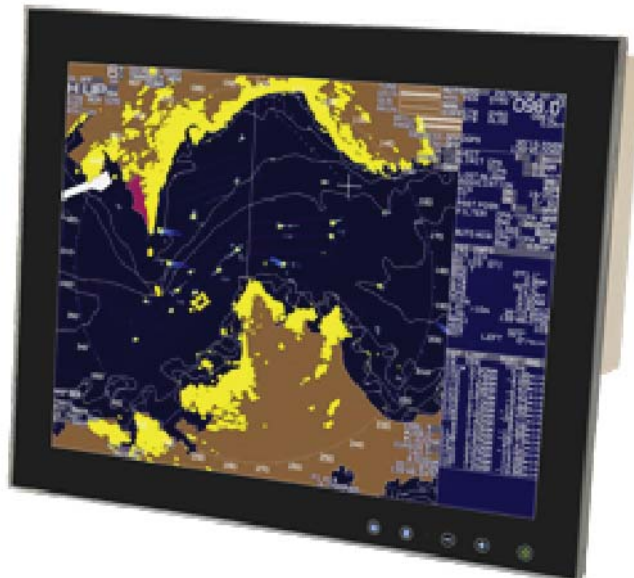


Glass Bridge LED Monitors

for Sunlight & Daylight Applications...

- 'Edge 2 Edge' AR Safety Glass - 6mm Laminated
- LED Backlit - Lower Heat / Higher Reliability
- Touch Sensitive Controls - Brightness / OSD
- 'Mix & Match' - Daylight and Sunlight Monitors
- 9 Source Inputs - DVI-D, RGB, S-Video & Composite
- Picture By Picture - Same Signal Source Type
- Dual Voltage - Integrated AC & DC Power Inputs
- Compliances - ABS, DNV, LR, IEC: 60945/61174/62388



AAdaptiv's 'Edge 2 Edge' Glass Bridge LED Monitors incorporate the latest LED Backlight technology to meet high ambient light conditions typically found in Bridge/Pilothouse applications. This provides increased performance, higher reliability and longer life.

Both Daylight and Sunlight viewable versions are available in 15", 19", 20" & 22" LCD panel sizes including Widescreen 16:10 ratio formats.

The overriding ability to "Mix and Match" combinations based on brightness output and LCD panel sizes is a key factor. This enables one to create a suite of monitors with seamless integration capability and space optimization for both new build and refit applications.

AAdaptiv's Monitors are equipped with unique LED Touch Sensitive controls built into the 'Edge 2 Edge' glass front bezel providing easy local operator control for: Backlight Brightness, OSD Functionality and Signal Source.

Maritime certification for recreational and commercial vessels has been achieved without sacrificing the pure glass design aesthetics and operational functionality. AAdaptiv's Glass Bridge Monitors are compliant⁵ for ABS, DNV, LR, IEC 60945 (Marine Communications), IEC 62388 (Radar/AIS/ARPA) and IEC 61174 (ECDIS).

Each Monitor is equipped with software configurable RS232 and RS422/485 ports enabling communications between monitors connected to a Host PC or 3rd Party OEM products. AAdaptiv's software utility allows you to address individual monitors when using RS422/485 to create a network.

Features include: Deep Dimming Backlight Brightness control down to less than 1 cd/m² (NIT) to meet ECDIS requirements. Dual AC/DC power supply input assists installation and provides redundancy.

Monitors' by AAdaptiv Technologies. It's a command decision for the digital world...

Glass Bridge LED Backlit Monitors

General Specifications

Specifications	15" Daylight	15" Sunlight	19" Daylight	19" Sunlight	20" W Daylight	20" W Sunlight	22" W Daylight	22" W Sunlight
Order Code / Part #	A7-1542D-DV	A7-1542S-DV	A7-1952D-DV	A7-1952S-DV	A7-2012D-DV	A7-2012S-DV	A7-2212D-DV	A7-2212S-DV
Display Size	15.0" Diagonal	15.0" Diagonal	19.0" Diagonal	19.0" Diagonal	20.1" Diagonal	20.1" Diagonal	22.0" Diagonal	22.0" Diagonal
Display Type	Active Matrix TFT LCD	Active Matrix TFT LCD	Active Matrix TFT LCD	Active Matrix TFT LCD	Active Matrix TFT LCD	Active Matrix TFT LCD	Active Matrix TFT LCD	Active Matrix TFT LCD
Display Ratio	4:3	4:3	5:4	5:4	16:10 Widescreen	16:10 Widescreen	16:10 Widescreen	16:10 Widescreen
Backlight Brightness	750 cd/m ² (nits)	1600 cd/m ² (nits)	750 cd/m ² (nits)	1200 cd/m ² (nits)	750 cd/m ² (nits)	1100 cd/m ² (nits)	750 cd/m ² (nits)	1200 cd/m ² (nits)
Backlight Type	LED	LED	LED	LED	LED	LED	LED	LED
Backlight Life	Approx 50,000 hrs.	Approx 50,000 hrs.	Approx 50,000 hrs.	Approx 50,000 hrs.	Approx 50,000 hrs.	Approx. 50,000 hrs.	Approx. 50,000 hrs.	Approx. 50,000 hrs.
Dimming Range	0 - 100%	0 - 100%	0 - 100%	0 - 100%	0 - 100%	0 - 100%	0 - 100%	0 - 100%
Resolution - Native	1024 x 768 / XGA	1024 x 768 / XGA	1280 x 1024 / SXGA	1280 x 1024 / SXGA	1680 x 1050 / WSXGA	1680 x 1050 / WSXGA	1680 x 1050 / WSXGA	1680 x 1050 / WSXGA
Resolution Range	VGA up to UXGA	VGA up to UXGA	VGA up to UXGA	VGA up to UXGA	VGA up to WUXGA	VGA up to WUXGA	VGA up to WUXGA	VGA up to WUXGA
Signal Input Sources	x2 DVI-D x2 RGB (VGA) x4 Composite S-Video	x2 DVI-D x2 RGB (VGA) x4 Composite S-Video	x2 DVI-D x2 RGB (VGA) x4 Composite S-Video	x2 DVI-D x2 RGB (VGA) x4 Composite S-Video	x2 DVI-D x2 RGB (VGA) x4 Composite S-Video	x2 DVI-D x2 RGB (VGA) x4 Composite S-Video	x2 DVI-D x2 RGB (VGA) x4 Composite S-Video	x2 DVI-D x2 RGB (VGA) x4 Composite S-Video
Input Voltage (Dual)¹	AC (90 to 264V AC) DC (9 to 36V DC)	AC (90 to 264V AC) DC (9 to 36V DC)	AC (90 to 264V AC) DC (9 to 36V DC)	AC (90 to 264V AC) DC (9 to 36V DC)	AC (90 to 264V AC) DC (9 to 36V DC)	AC (90 to 264V AC) DC (9 to 36V DC)	AC (90 to 264V AC) DC (9 to 36V DC)	AC (90 to 264V AC) DC (9 to 36V DC)
Operating Temp.	-15 to 65°C	-15 to 65°C	-15 to 55°C	-15 to 55°C	-15 to 55°C	-15 to 55°C	-15 to 55°C	-15 to 55°C
Construction	6mm Glass bonded to Aluminium housing	6mm Glass bonded to Aluminium Housing	6mm Glass bonded to Aluminium Housing	6mm Glass bonded to Aluminium Housing	6mm Glass bonded to Aluminium Housing	6mm Glass bonded to Aluminium Housing	6mm Glass bonded to Aluminium Housing	6mm Glass bonded to Aluminium housing
Front Glass - Optics	Optically Bonded	Optically Bonded	Optically Bonded	Optically Bonded	Optically Bonded	Optically Bonded	Optically Bonded	Optically Bonded
Front Glass - Sealing²	IP67 / NEMA 6	IP67 / NEMA 6	IP67 / NEMA 6	IP67 / NEMA 6	IP67 / NEMA 6	IP67 / NEMA 6	IP67 / NEMA 6	IP67 / NEMA 6
Mounting Styles³	Console / Flush & VESA 100mm	Console / Flush & VESA 100mm	Console / Flush & VESA 100mm	Console / Flush & VESA 100mm	Console / Flush & VESA 100mm	Console / Flush & VESA 100mm	Console / Flush & VESA 100mm	Console / Flush & VESA 100mm
Cut-out Size (Inches)	13.85 W x 11.02 H	13.85 W x 11.02 H	16.57 W x 13.85 H	16.57 W x 13.85 H	18.95 W x 12.81 H	18.95 W x 12.84 H	20.43 W x 13.54 H	20.43 W x 13.54 H
Cut-out Size (mm)	352 W x 280 H	352 W x 280 H	421 W x 352 H	421 W x 352 H	482 W x 326 H	482 W x 326 H	519 W x 344 H	519 W x 344 H
Dimensions (Inches)	14.2 W 11.5 H 3.7 D	14.3 W 11.5 H 3.7 D	17.04 W 14.2 H 3.9 D	17.04 W 14.2 H 3.9 D	19.48 W 13.2 H 3.9 D	19.48 W 13.2 H 3.9 D	20.9 W 14.2 H 3.9 D	20.9 W 14.2 H 3.9 D
Dimensions (mm)	363 W x 292 H x 94 D	363 W x 292 H x 94 D	433 W x 361 H x 101 D	433 W x 361 H x 101 D	495 W x 337 H x 101 D	495 W x 337 H x 101 D	531 W x 361 H x 101 D	531 W x 361 H x 101 D
Communications	RS232 & RS485 Ports	RS232 & RS485 Ports	RS232 & RS485 Ports	RS232 & RS485 Ports	RS232 & RS485 Ports	RS232 & RS485 Ports	RS232 & RS485 Ports	RS232 & RS485 Ports
User Controls⁴	LED Touch Sensitive	LED Touch Sensitive	LED Touch Sensitive	LED Touch Sensitive	LED Touch Sensitive	LED Touch Sensitive	LED Touch Sensitive	LED Touch Sensitive
Infrared Control	IrDA Sensor	IrDA Sensor	IrDA Sensor	IrDA Sensor	IrDA Sensor	IrDA Sensor	IrDA Sensor	IrDA Sensor
Automatic Dimming	Ambient Light Sensor	Ambient Light Sensor	Ambient Light Sensor	Ambient Light Sensor	Ambient Light Sensor	Ambient Light Sensor	Ambient Light Sensor	Ambient Light Sensor
Touchscreen⁵	Factory Option	Factory Option	Factory Option	Factory Option	Factory Option	Factory Option	Factory Option	Factory Option
Marine Compliances⁶	ABS, DNV, LR, RINA IACS E10 IEC 60945 IEC 62388	ABS, DNV, LR, RINA IACS E10 IEC 60945 IEC 62388	ABS, DNV, LR, RINA IACS E10 IEC 60945 IEC 61174 IEC 62388	ABS, DNV, LR, RINA IACS E10 IEC 60945 IEC 61174 IEC 62388	ABS, DNV, LR, RINA IACS E10 IEC 60945 IEC 61174 IEC 62388	ABS, DNV, LR, RINA IACS E10 IEC 60945 IEC 61174 IEC 62388	ABS, DNV, LR, RINA IACS E10 IEC 60945 IEC 61174 IEC 62388	ABS, DNV, LR, RINA IACS E10 IEC 60945 IEC 61174 IEC 62388
Limited Warranty	2 Year	2 Year	2 Year	2 Year	2 Year	2 Year	2 Year	2 Year

Notes:

- 1) Input Voltage (Dual): Each Monitor is equipped to accept AC (50/60Hz) and/or DC power input.
- 2) Front Glass Sealing: IP67 / NEMA 6 when Monitor is Console / Flush mounted. Each monitor is supplied with neoprene gasket to maintain sealing between monitor and console.
- 3) Mounting Styles: Standard mounting brackets enable installation in Consoles up to 30mm (1.18in) thick. Equipped with VESA 100mm compliant rear fixing holes.
- 4) User Controls: Touch Sensitive LED illuminated buttons are integrated into the Front Glass providing functionality for; Power, Brightness (Plus & Minus), Signal Source & OSD Menu.
- 5) Touchscreen: Factory Option uses Projected Capacitance Technology.
- 6) Marine Compliances: Monitors are 'Designed to Comply'. Program for full independent certification scheduled for Q2 '11 - subject to demand.

* Specifications subject to change without notice.

Revision 5 - Feb 2011

AADAPTIV.COM
A COMMAND DECISION

sales@adaptiv.com